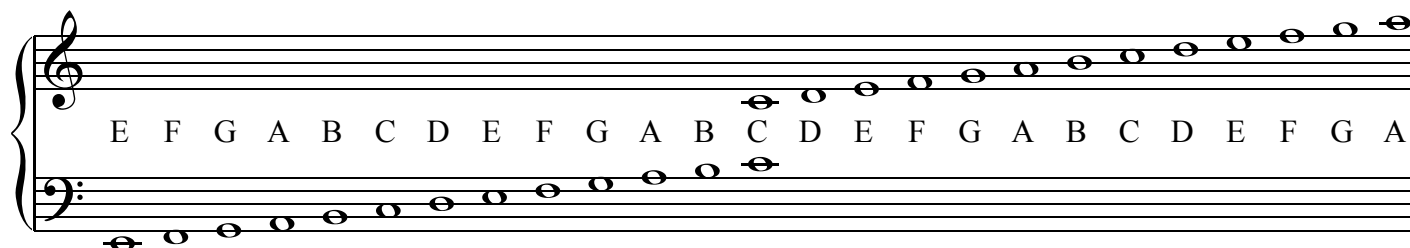


# Cheat Sheet

## LINES AND SPACES



### *Shortcut*

#### **Bass Clef**

Lines: GBDFA (Great Big Dogs Fight Animals)

Spaces: ACEG (All Cows Eat Grass)

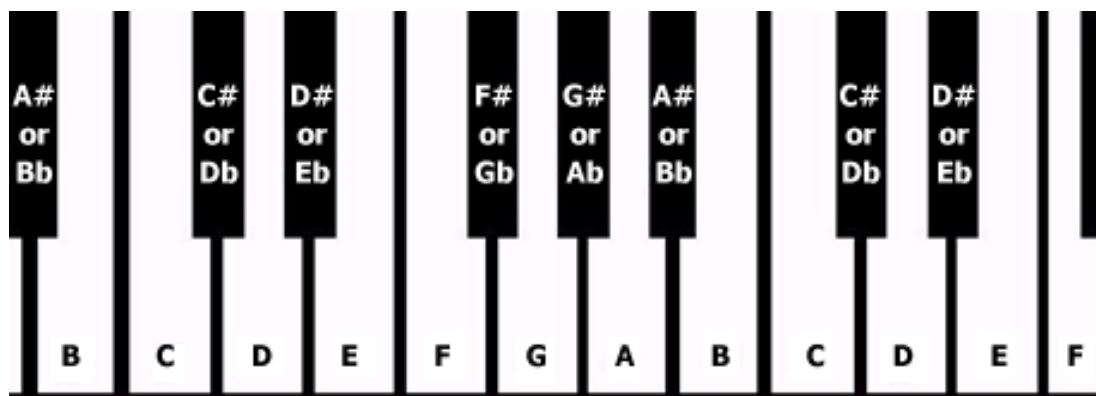
### *Shortcut*

#### **Treble Clef**

Lines: EGBDF (Every Good Boy Deserves Fudge)

Spaces: FACE

## KEYBOARD WITH NOTE NAMES



## NOTE & REST VALUES

