




COVID RESPONSE GUIDE 2021





Birmingham City Schools is committed to providing a safe, secure and nurturing environment for all students while guiding them to achieve their highest potential.

As Birmingham City Schools (BCS) prepares for the 2021-2022 school year, it is important to note that we are committed to the overall well-being of our students and staff. The school year will start on August 2, 2021, with in-person teaching and learning. The Superintendent and the Board of Education will consistently assess local conditions surrounding the COVID-19 pandemic and make any needed changes to our plan. The Superintendent and the Board of Education will review recommendations from the Alabama State Department of Education (ALSDE), the Jefferson County Department of Health (JCDH), the Alabama Department of Public Health (ADPH), the Centers for Disease Control and Prevention (CDC), and the American Academy of Pediatrics to make the best and safest decisions for our students and employees.

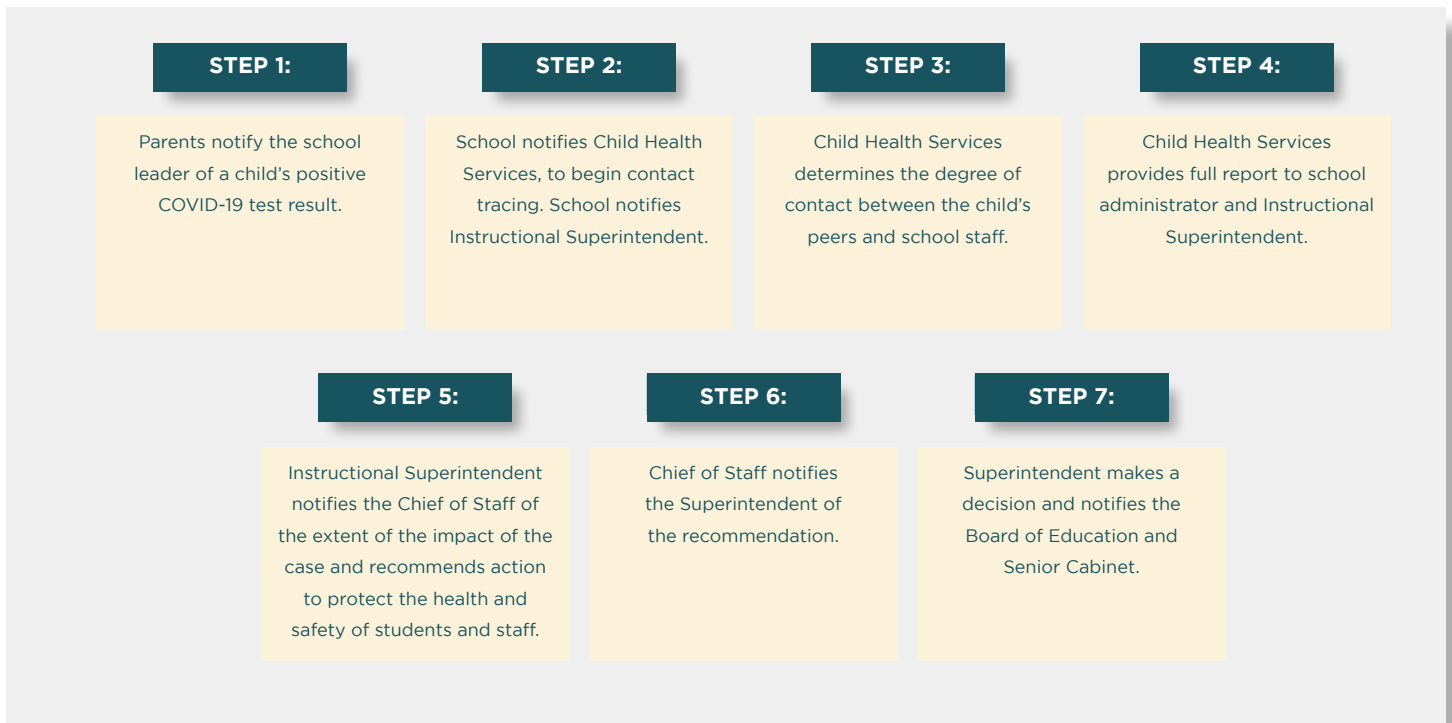
**BCS LEARNING
MODEL FOR
OPENING
SCHOOLS
2021-22**

The purpose of the following information is to describe the learning plan the district will use during the 2021-2022 school year. The goal is to inform all stakeholders of the plan for in-person teaching and learning, because research shows that this method provides the best opportunity for success for most scholars.

In-person teaching and learning will be used as long as public health protocols can be maintained during the current pandemic.

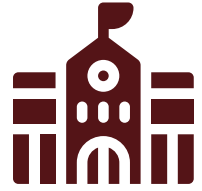
BCS will use multi-tiered communication and notification in responding to COVID-19. Decisions regarding COVID-19 on school campuses will be made in consultation with local school leaders, the instructional superintendent, chief of staff and superintendent, with a goal of mitigating the spread of the virus and maintaining a safe and healthy learning environment.

COVID-19 Response Communications Flow Chart



NOTE: Parents of children who exhibit COVID-19 symptoms at school will be notified immediately. Parents will be asked to pick up their children as soon as possible. Students will be quarantined at school until parents arrive. Parents will be asked to have their child tested for COVID-19 before returning to school. Students who are on quarantine will have temporary remote teaching and learning.

BCS LEARNING MODEL FOR OPENING SCHOOLS 2021-22



Traditional



All Students
(PK-12) Return
to a Regular,
Face-to-Face
Schedule.

ATHLETICS

- BCS staff will closely monitor guidance from AHSAA related to decisions about sporting events.
- Masks will be required at all events and social distances will be encouraged at all times.
- Athletes/students cannot share water bottles, towels, etc.
- Practices will be limited to students and essential staff.
- Concessions will be available with emphasis on cashless transactions.
- Band and auxiliary units will perform, and will maintain social distance in the stands.
- Tickets for all games will be purchased through GOFAN, reducing the need for cash transactions.

ENROLLMENT, SCHEDULING, COUNSELING

- Registration began in April 2021.
- BCS students (new and returning) must register online using the new PowerSchool Enrollment software for the 2021-2022 school year, prior to enrollment in classes at the local school.
- Each parent/guardian will be required to upload a copy of two current proofs of residency.
- Finalization of student schedules will be handled by the local school.
- Student schedules will be loaded in PowerSchool for parent viewing by August 2, 2021.
- The BCS Code of Conduct will apply throughout the district.
- Attendance will be recorded by the teacher, and students will be marked as present or absent.
- Students who are required to quarantine will be marked as “All Day Other,” “COVID Positive” or “COVID Exposed.” (These will not be counted as an absence. Students who are physically able to participate in class virtually will do so.)
- Teachers will assign grades and confer academic credit for work and activities performed by students in accordance with objectives and generally accepted instructional and grading standards outlined in BCS Board Policy.

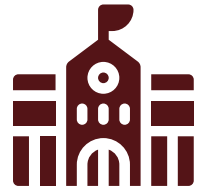
NUTRITION

- Meal services will be offered in accordance with Centers for Disease Control and Prevention (CDC), the State of Alabama’s Implementation of the Food and Drug Administration (FDA) Food Code, and under the guidance of the Jefferson County Department of Health.
- Under this guidance, staff will take reasonable steps, where practicable, to regularly disinfect frequently used items and surfaces throughout the facility.
- Each employee shall wear a mask or other facial covering.
- All meals will be provided as carry out options in disposable trays for consumption in the classroom where social distancing is already in place.
- It is highly recommended that funds for purchase of additional items are placed on the student’s account via the online payment system (MySchoolBucks) which will aid in reduced transactions at the point of sales.
- For students without access to (MySchoolBucks), traditional cash payments can be tendered at the point of sale.

SAFETY/SECURITY, SCHOOL OPERATION, WELLNESS

- Parents should notify school staff immediately if their child is required to quarantine due to becoming COVID-19 positive or COVID-19 exposed.
- No more than 10 visitors will be allowed in a school at one time (all visitors will stay in school lobby area ONLY).
- All visitors are REQUIRED to have on a face covering prior to entering the school.
- Non-essential visitors will be restricted from entry to any school.
- Schools will have very specific protocols for student pick-up/drop-off; staggered entry and release (each school will specify their procedure and post).
- Students will not be allowed to share equipment, property or other objects.
- Toys that can not be cleaned by custodial staff will not be utilized in the classroom setting.
- Elementary teachers will have recess allotted times for students (see school for specifics).
- Signage will be posted throughout the school and grounds outlining social distancing requirements and directions.
- All classroom desks will be facing in the same direction and six feet apart (as much as possible).

BCS LEARNING MODEL FOR OPENING SCHOOLS 2021-22



Traditional



All Students
(PK-12) Return
to a Regular,
Face-to-Face
Schedule.

- Classrooms, restrooms, common areas, water fountains, and common spaces will be sanitized throughout the day.
- Custodial staff will have a rotating schedule for cleaning a classroom and common areas.
- Each school will have an ISOLATION room for students exhibiting symptoms of COVID-19.
- BCS is dedicated to ensuring all our facilities are safe for students and staff. To this end, the following expectations have been initiated:
 - All water fountains remain closed for use. However, students will be allowed to bring individual water bottles to school (clear/disposable only). Additionally, schools will make bottled water available. Furthermore, to ensure restroom sanitation, custodial staff will sanitize restrooms frequently throughout the school day. This sanitation will include ensuring soap and/or sanitizer are available in all restrooms and common locations throughout all BCS facilities. All locker usage will be prohibited.
 - Moreover, classroom sanitation and cleaning will be a joint effort between the school custodial staff, classroom teachers, and other school personnel. All classroom teachers will be provided with sanitizing equipment to spot clean desks, counters, etc., as needed. Additionally, all teachers will create a seating chart for each student in the district that ensures all student desks are spaced apart as much as is feasibly possible and placed in forward-facing rows. All desks should be cleaned during transitions times. During this time, flexible seating will be prohibited. Social distancing will be required for all students during scientific labs.
 - Additionally, teachers will be required to remove and minimize the inclusion of cloth and other soft surfaces within the classroom environment (ex. Rugs, beanbags, reading tents, etc.). Teachers will educate students on best practices for self-care for themselves as well as others (hand-washing, limit sharing of personal items, sneezing in elbow, etc...). When feasible, desks and table surfaces should be cleaned during transition times. During arrival, there will not be a common area for students to congregate. Therefore, special attention will be given to the coordination of teacher arrival to ensure all students are supervised as students enter the homeroom or first period class upon arrival to school each day.
 - Finally, Birmingham City Schools will require all staff to complete the BCS Annual Safety Trainings in addition to any COVID-19 trainings. All staff are expected to serve as role models by encouraging hand-washing and basic respiratory hygiene to include covering the mouth when coughing/sneezing, and wearing a face-covering.

INSTRUCTION AND ASSESSMENT

- Instruction for core and elective subjects will be provided in-person.
- BCS will incorporate online resources and platforms as needed.
- Instruction will be aligned to the Critical Alabama College and Career Ready standards (CCRS).
- Student learning gaps will be identified and addressed through a variety of intervention tools.
- Students will receive Social Emotional Learning (SEL) and support to address needs related to COVID-19.
- Students will utilize the district's online application menu on Clever to increase consistency and effectiveness of online resources.
- The data from student assessments will be used to inform instruction and plan for student learning and intervention.
- Students will participate in benchmark, diagnostic and summative assessments as outlined in the BCS Assessment Calendar.
- K-5 students in BCS will participate in the online IReady universal screening assessment in reading in the fall, mid-year and end of year. This assessment will reveal areas of strength and weakness in phonological awareness, phonics, high frequency words, vocabulary, and comprehension. According to the data that is revealed, each student's intervention needs will be identified. The leadership team, instructional coaches, and teachers from each school, will use the results of the universal screening assessment to plan daily intervention.
- Open House programs can be virtual or in-person (maintaining social distance).
- Fieldtrips will be allowed, following guidelines from the CDC and the Alabama Department of Public Health.

TRANSPORTATION

- Bus drivers will be required to wear a face mask or other face coverings.
- Bus drivers will provide hand sanitizer to students as they enter the bus.
- Students will be required to wear a face mask when entering the bus and for the duration of the bus ride.
- Students will enter and exit the bus as instructed by the driver to ensure social distancing is maintained.
- Buses will travel with roof hatches and windows open, weather permitting, to ensure continued air circulation. Buses will be cleaned before, between, and after each route.



Traditional



All Students
(PK-12) Return
to a Regular,
Face-to-Face
Schedule.

TECHNOLOGY

- BCS will continue with the ONE-to-ONE Initiative, providing electronic devices for each student.
- Returning BCS students will use devices issued to them in the previous school year.
- Students will use their electronic devices at school under the direction of teachers.
- The use of school-issued technology will be encouraged at home to enhance learning.
- Students will consistently charge their devices to ensure full functionality.
- All teachers will provide training for students on the use of digital citizenship, device management and BCS learning platforms.
- Parents will be provided digital resources online to support their child's learning.
- Students and parents will be required to sign a technology agreement prior to receiving a device.

STUDENT SERVICES

- Each school clinic will be equipped with adequate medical supplies and personal protective equipment for healthcare providers to use in keeping students and staff safe.
- Child Health staff will ensure a professional service team deep cleans and disinfects the clinic and isolation room (daily).
- Administrators will limit the number of students allowed to go into a restroom at one time.
- Security officers will be deployed to various schools to ensure social distancing guidelines are followed.
- Security dispatchers will monitor each school daily utilizing CCTV to ensure social distancing among students.
- All students will be trained on health and safety measures to keep them safe.
- Training will include (arrival/dismissal, transitions, classrooms, peer-to-peer interaction, breakfast and lunch, recess, sharing of property, etc.).
- A universal Social Emotional Learning (SEL) curriculum will be taught to support the wellbeing of all students.
- School counselors will be readily available to assist and support students as needed.
- A referral process will continue for students needing a range of services from prevention, therapy, and medication management.
- Instruction for students with Individual Education (IEPs) Plans and 504 plans will be provided in-person.
- BCS will continue to develop and revise IEPs for students with disabilities as appropriate. Additionally, BCS will continue to provide reasonable accommodations as outlined in 504 Plans in reference to screening, developing and revision of said plans.

